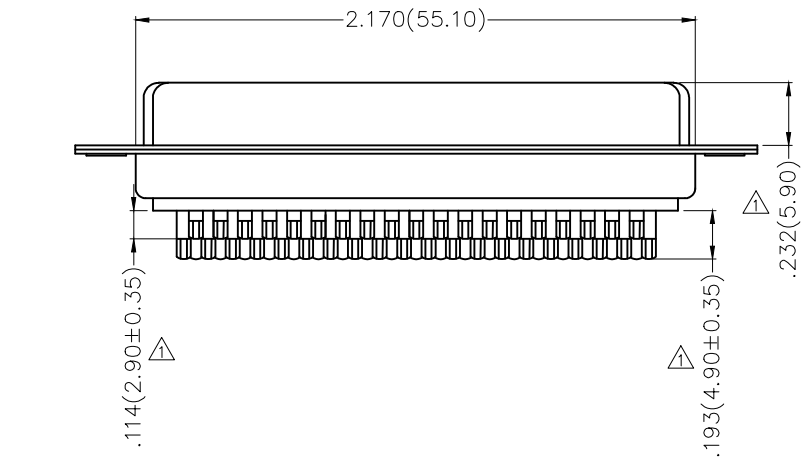
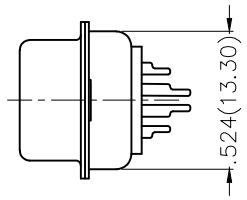
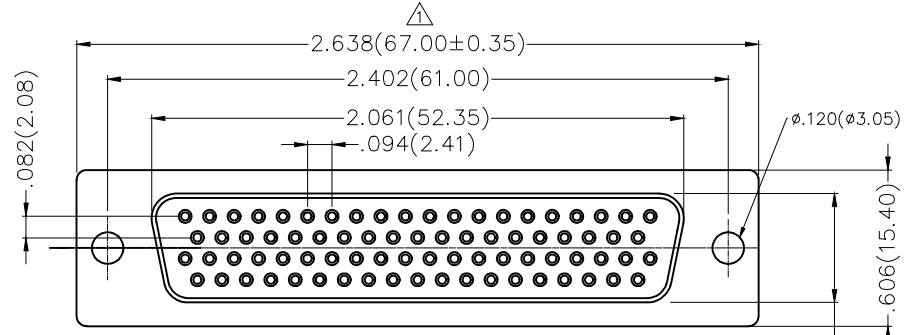
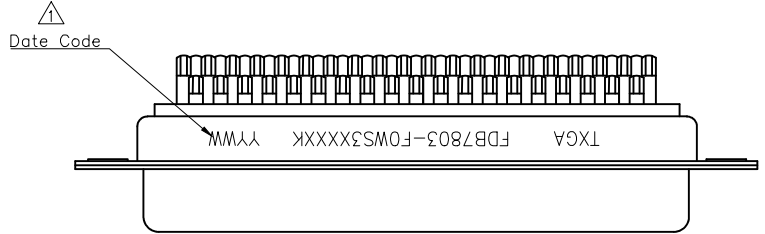


REV	LOCATIONS	DESCRIPTION	DATE	REVISER	APPD
1	△	Update version, Add marking code	13/Jan/25	NICK	LEO



SPECIFICATIONS

- Electrical
- 1.Current Rating: 3A AC(rms)/DC
 - 2.Voltage Rating: 250V AC(rms)/DC
 - 3.Contact Resistance: 25 mΩ Max
 - 4.Insulation Resistance: 1000 MΩ MIN
 - 5.Withstanding Voltage: 500V AC r.m.s
 - 6.Temperature Range—Operating: -55°C~+105°C
- Material and Finish
- 1.Housing: PBT UL 94V-0
 - 2.Contact: Copper Alloy/
- △ Selective gold on contact area, tin on tail
3. Front Shell: SPCC/ Nickel Plated
 - Back Shell: SPCC/ Tin Plated

Ordering Information

FDB 78 03 — FO W S 3 XX XX K
 1 2 3 4 5 6 7 8 9 10

1 Series Name FDB- D-SUB Connector	2 Circuits 78	3 Distinction No. 03	4 Type FO-Female	5 Assembly Layout W-Welding Type
6 Entry Type S-180° Vertical	7 Plating 3-Selective gold in contact area, tin on tail	8 Thickness of Plating 00-Gold Flash 03-3μ" Custom Plate Available	9 Color-Resin K6-Black U1-Blue	10 Packaging K-Tray

 THIRD ANGLE PROJECTION	GENERAL TOLERANCES (UNLESS SPECIFIED)		APPROVE BY FRANK	DATE 28/JUN/13	PART NO. FDB7803-FOWS3XXXK	ITEM NO. FDB7803	 Leader Of Industry
	DESIGN UNITS Inch (metric)	X.±.012(0.30)	X.±5'	CHECKED BY JACOB	DATE 28/JUN/13	TITLE D-SUB 78PIN FEMALE CONN	
SCALE 5:1	SIZE A4	X.XX±.008(0.20)	.X'±2'	DRAWN BY CHERRY	DATE 28/JUN/13	THIS DRAWING CONTAINS INFORMATION THAT IS PROPRIETARY TO TXGA INDUSTRIAL ELECTRONICS(S.Z)CO.,LTD AND SHOULD NOT BE USED WITHOUT WRITTEN PERMISSION	
		X.XX±.006(0.15)	.XX'±1'			REV 1	SHEET NO. 1/1
		X.XXX±.004(0.10)	.XXX'±0.5'				